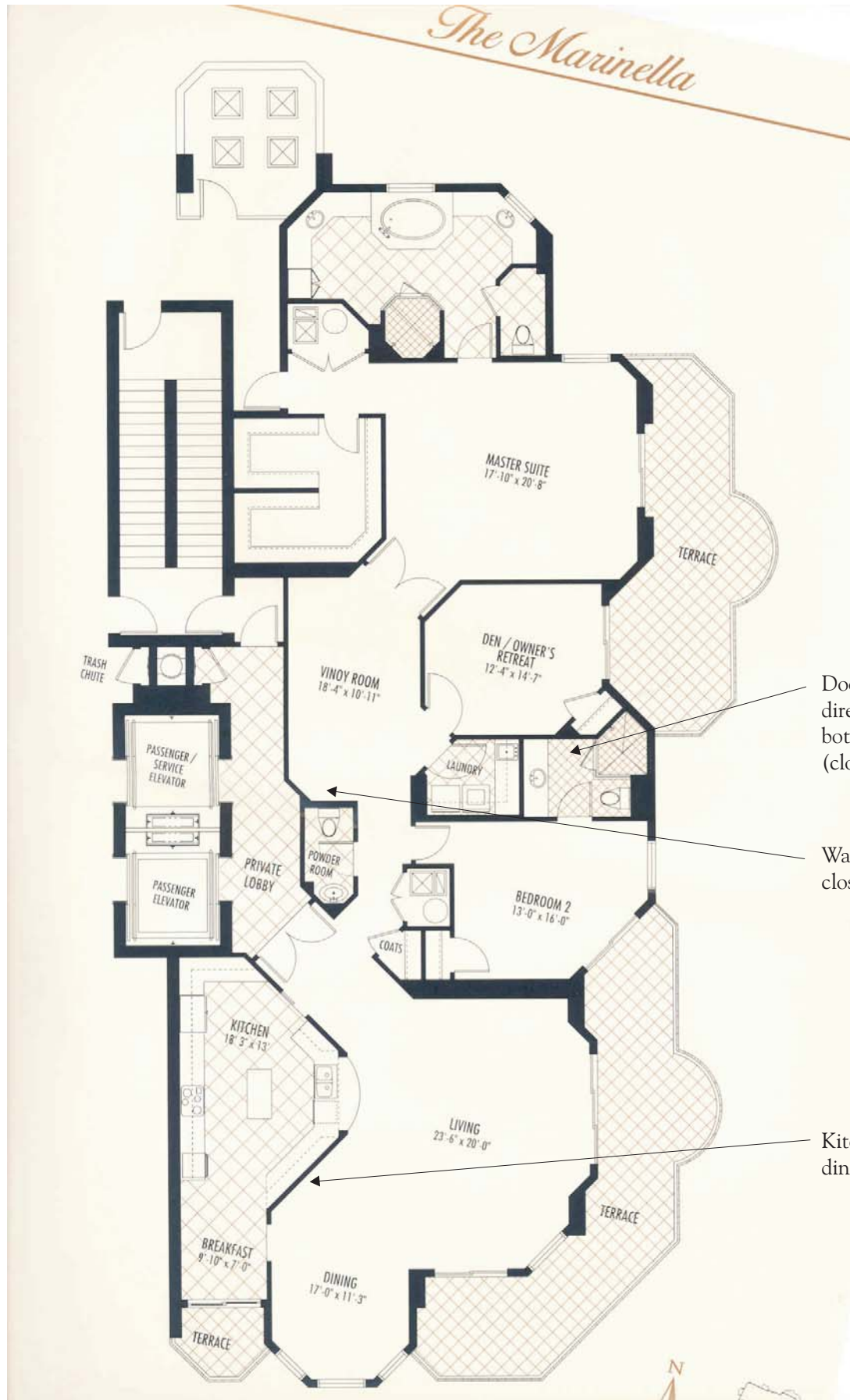


The Marinella

Unit #522
Tower 2



Door added to allow direct access from both bedrooms (closet moved).

Walk-in storage closet added here.

Kitchen wall opened; dining counter added.

Marketed by The Sharon Simms Team, Coldwell Banker Residential Real Estate, Inc.

The information contained herein is deemed accurate but is not warranted. Independently Owned And Operated By NRT, Incorporated. Equal Housing Opportunity.