

# Water View Condo

7430 Sunshine Skyway Lane S. #603

St. Petersburg, FL 33711

Offered at \$225,000.

2 Bedrooms • 2 Baths

1,100 square feet • 1 Assigned Parking Space

Waterfront Community • Pool • Dock

[www.SouthBayCondo603.com](http://www.SouthBayCondo603.com)



Imagine sipping your morning coffee on your balcony watching the sun rise over the sparkling waters of Tampa Bay. That's the lifestyle you'll enjoy in this spacious condo. Nestled in a quiet community on St. Petersburg's southern point, just before the Sunshine Skyway Bridge,

coming home to South Bay will make the worries of the world drift away.

An entry foyer welcomes you inside this condominium home. The kitchen is centrally located, with light wood cabinetry and white appliances. A pass-through opening means you've got a great water view even from here.

You'll appreciate the cool ceramic tile flooring throughout the living areas, including an inset design in the dining area. The adjacent living room is spacious and comfortable. A wall of sliding glass doors opens out to the large balcony, with its sweeping water view. You'll love relaxing here!

There are two bedrooms and two full baths. The Master suite has its own separate balcony overlooking the bay, and a private bath and walk-in closet. The second bedroom has sliding glass doors out to the main balcony. A bright hall bath is nearby, across from the laundry closet with full-sized washer and dryer.

This condo is ideal for a primary home, for a vacation retreat or even a weekend getaway. It's priced fairly, and the location is ideal. Come see for yourself today what the waterfront lifestyle is all about!



The kitchen has a pass-through so you can enjoy the gorgeous water view.



The dining room (above) and spacious living room (below).



THE  
SIMMS  
TEAM



Office 727.898.2582 | Toll Free 888.SIMMS88  
E-mail: [info@SimmsTeam.com](mailto:info@SimmsTeam.com)

ALVA International, Inc.  
238 Beach Drive NE | St. Petersburg, FL 33701

[www.SimmsTeam.com](http://www.SimmsTeam.com)



# It's about the lifestyle . . .

You'll appreciate the laid-back lifestyle that focuses on the water here. Relax poolside any time of year - the pool is heated in the winter and cooled in the summer. The long dock is a great place to take a stroll, sit and watch the sun rise or set. This community is designed around enjoying the best that



Florida has to offer, with turnkey living and no worries about the maintenance you'd have in a single-family home.

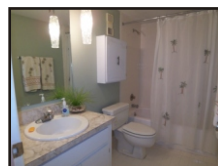
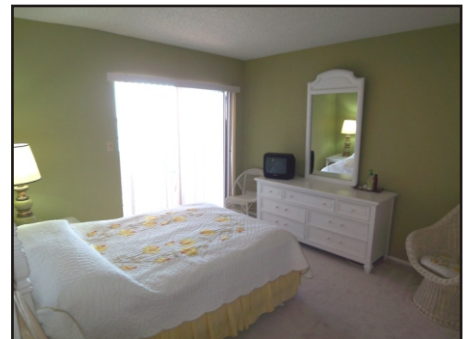
They say that location is everything, and you'll appreciate how convenient South Bay is. Interstate access is a snap, either northbound or south over the infamous Sunshine Skyway Bridge. Heading north, you're just ten minutes from the vibrant activity of downtown St. Petersburg. Head west and in ten minutes you can be at award-winning Fort DeSoto Park or on the sandy white beaches of the Gulf of Mexico. You can be at Tampa International Airport in less than thirty minutes.



**Welcome to South Bay Condominium!**



**The Master suite has a water view and balcony from the bedroom (above) and a private bath.**



**The second bedroom has sliding glass doors opening to the main balcony.**

## For the Detail-Oriented . . .

### Property Features:

- Fully furnished
- 2 Bedrooms / 2 Baths (both bedrooms have sliding glass doors to balconies)
- Spectacular water views
- Kitchen features dishwasher, disposal, range & refrigerator and a pass-thru
- Washer & dryer included
- Spacious living room has sliding glass doors opening to balcony
- Master suite includes private bath and walk-in closet
- Electric grills permitted on balcony
- Covered parking space #603
- 2008 property taxes \$864\* with Homestead Exemption

\*Pinellas County Property Appraiser indicates that 2008 taxes without Save-Our-Homes cap would be \$3,347 per year, or \$4,234 without Homestead

### Community Features:

- Swimming pool is heated in winter, cooled in summer
- 2-1/2 mile bike/walking path goes all the way to the Skyway rest area
- Maintenance fee is \$298 per month; Fee includes trash removal, water & sewer, exterior building maintenance, basic cable television (Bright House), escrow reserves, building insurance, lawn & landscaping
- Pets allowed (2 maximum)
- Rentals are permitted (no more than 3 per year, 90 day minimum rentals)
- Association approval is required, with a \$40.00 application fee (personal interview is required)
- Association management is on-site

**See more information about this property online, including a visual tour with more photos, property disclosures and a pre-offer package. Go to:**  
**[www.SouthBayCondo603.com](http://www.SouthBayCondo603.com)**

**Showings available by appointment.**

Marketed by  
**THE  
SIMMS  
TEAM**

Office (727) 898-2582 - Toll Free (888) SIMMS-88

E-Mail: [info@simmsteam.com](mailto:info@simmsteam.com)

**ALVA INTERNATIONAL, INC.**

238 Beach Drive NE, St. Petersburg, FL 33701



**Take a visual tour of this home and others at [www.SimmsTeam.com](http://www.SimmsTeam.com)**