

Brand New Townhome

5168 6th Way North
St. Petersburg - Bay Breeze Cove
Offered at \$275,000.

3 Bedrooms • 2-1/2 Baths • 2 Car Garage
1,481 sq. ft. • Built 2005

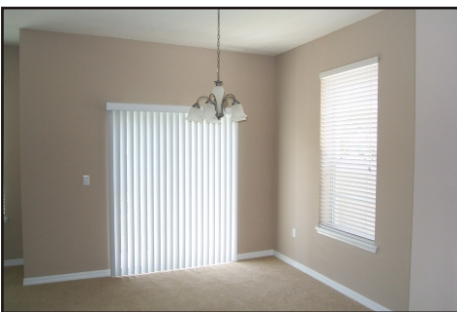
www.BayBreezeTownhome.com



This brand new Bay Breeze Cove townhome offers the ultimate upgrade package for the price of “plain Jane.” In an exciting new community ideally located in the midst of new shops and development, it’s just minutes to downtown St. Petersburg or to the Gateway/Carillon business areas, and has easy access to Interstate 275. Enjoy a brand-new home in a great community and experience the best of Florida living!



- A lovely landscaped entrance and lake with fountain welcome you to the Bay Breeze Cove community.
- Consistent design makes the neighborhood appealing.
- The great room plan offers a large living room and dining area with sliding glass doors out to the rear yard and patio.
- The kitchen features granite-look Silestone counters, rich raised panel 42” wood cabinetry, stainless steel appliances, ceramic tile flooring and backsplash, and it features a pantry closet and a casual dining bar open to the living area.
- A powder room is conveniently located downstairs.
- An inside laundry room features brand new washer & dryer.
- The two-car garage with automatic door opener is spacious.



Marketed by

THE
**SIMMS
TEAM**

RE/MAX Metro

Direct (727) 866-0048

E-Mail: sharon@simmsteam.com

201 Second Ave. N., St. Petersburg, FL 33701

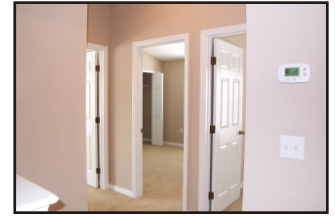
Each Office Independently Owned and Operated





Three full bedrooms and two full baths are located upstairs.

- The Master suite features vaulted ceilings and a large closet.
- The Master bath has a double vanity with granite-look Silestone counter, and wood cabinetry, with a large tile walled shower.
- All three bedrooms have spacious closets.
- A hall bath features granite-look Silestone counters, wood cabinetry and an outrageously high vaulted ceiling!
- Upgraded Berber carpeting in all bedrooms, traffic and living areas.



- The home is wired for security system and cable / high-speed internet ready.
- Cute patio & rear yard area are ideal for cooking outside & relaxing!



DETAILS & MECHANICAL SPECIFICATIONS

- Maintenance fee is \$675 quarterly.
- Homeowner's association is required, and covers building exterior, roof, reserves, landscaping and building insurance.
- There is a \$50 transfer fee and a \$375 capital contribution required for all sales.
- Pets are allowed (maximum of two) with no size or breed restrictions.
- Rentals are permitted - no minimum length.
- Community building features a fenced pool and spill-over spa with fountain.



ROOM DIMENSIONS:

- Living Room: 14' x 14'
- Dining Room: 11' x 11'
- Kitchen: 12' x 12'
- Master Bedroom: 14' x 14'
- 2nd Bedroom: 11' x 11'
- 3rd Bedroom: 10' x 13'

Marketed by

THE SIMMS TEAM

Direct (727) 866-0048 - Toll Free (888) SIMMS-88
E-Mail: sharon@simmsteam.com

RE/MAX Metro

201 Second Avenue N., St. Petersburg, FL 33701
Each Office Independently Owned and Operated



Sharon Tami Rob

Take a visual tour of this home and others at www.SimmsTeam.com