

Magnolia Heights Bungalow

3421 Iris Street N. • St. Petersburg, FL 33705
Offered For \$150,000.

3 Bedrooms • 2 Baths • 1 Car Garage • Built 1930
75' x 130' Fenced Lot • 1,648 sq. ft • MLS# U7546265

www.3421IrisStN.com



If you love the historic bungalow style and want a big back yard, look no further! This great home in Magnolia Heights has lots of space inside & out - you'll love living here!

From the covered front porch, you step inside to a wide entry and spacious living room, with gorgeous hardwood floors. To the left, the focal point is a dramatic wood-burning fireplace - think about curling up with a good book or a glass of wine! A built-in bookcase is a perfect example of the period design.

There's a formal dining room, too - great for enjoying casual meals or entertaining. From there, step out to the shady sunroom. The soothing sounds of the fountain in the zen garden outside will help you relax.

The kitchen is fun and functional. You'll like the stainless steel dishwasher, newer refrigerator, and especially cooking with natural gas! There's plenty of counter and cabinet space, and a window over the sink looks out to the garden. Just beyond is the laundry room, which you'll really appreciate!

Down a richly red hall from the living room, you'll find the bedrooms, each of them spacious and featuring the hardwood floors. Take your pick - do you prefer lots of light or more privacy? There's a cute hall bath that's been completely updated without getting rid of the original style. But the showpiece of this house is a second full bath that's like a spa experience!

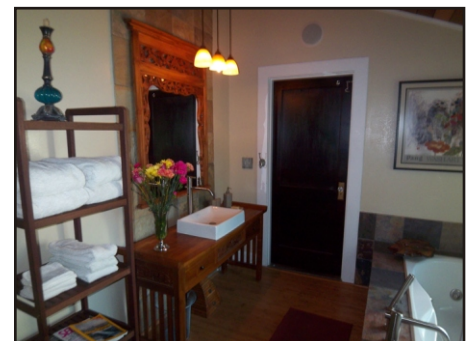
You'll think you've stepped into a fancy resort when you see the main bath. Rich wood accents lovely natural stone tilework. Slip into the whirlpool tub with a little bubbly and let the worries of the world wash away. Or, get energized in the large stone tiled shower. Either way, you may never want to leave this room!

Out back, you'll love cookouts on the big wood deck, and the fenced rear yard is wonderful! Horseshoes, anyone? There's no end to the possibilities of enjoying this yard. The detached garage offers lots of options, too.

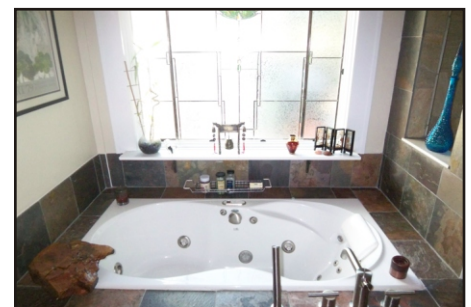
All of this in a really convenient location! See for yourself today how much you could enjoy living here.



The living room (above) features a wood-burning fireplace. The dining room (below) is great for entertaining!



You won't believe the incredibly luxurious spa bath, with a whirlpool tub and a large separate shower.



THE
SIMMS
TEAM



Office 727.898.2582 | Toll Free 888.SIMMS88
E-mail: info@SimmsTeam.com

ALVA International, Inc.
238 Beach Drive NE | St. Petersburg, FL 33701

www.SimmsTeam.com



Details . . .

Interior Features:

- Gorgeous hardwood floors
- Wood-burning fireplace
(gas line to old floor furnace is capped but easy access to convert for fireplace)
- Formal dining room
- Stainless steel kitchen appliances including dishwasher and stove, newer black refrigerator.
- Natural gas stove & water heater
- Spectacular spa bath with whirlpool tub & separate shower
- Surround sound speakers in the spa bath and in the sunroom
- Inside laundry room with washer & gas dryer included
- New lighting fixtures throughout
- Attic is large enough to walk end-to-end; could be converted

Exterior Features:

- Metal roof replaced 2006, with transferrable warranty (25 year manufacturer warranty)
- Central heat & air conditioning
- Electrical system rewired and upgraded to 200 amp in 2006-07
- Fenced rear yard with gate
- Elevated wood backyard deck
- Sprinklers in front yard on well
- Mature landscaping & oak trees
- Raised foundation for easy access underneath home
- Optional neighborhood association \$10 per year
- 2011 property taxes \$2,330 with no homestead exemption



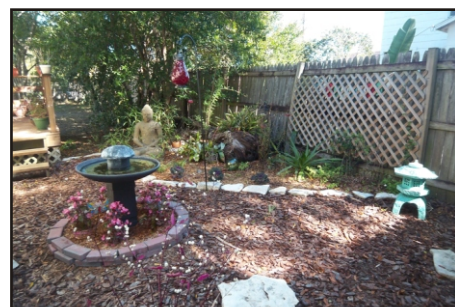
The kitchen is fun & functional, with brand new cabinetry and a gas stove!



Here are one of the three spacious bedrooms and the second bath.



The comfortable sunroom overlooks a tranquil garden outside.



This deck and big back yard will make you the envy of all your friends!



ROOM DIMENSIONS:

Living Room: 13'-2" x 22'-9"

Dining Room: 13'-3" x 13'-2"

Kitchen: 11'-7" x 10'-4"

Bedroom 1: 11'-6" x 11'

Bedroom 2: 10'-7" x 11'-7"

Bedroom 3: 10'-11" x 10'-11"

Porch: 9' x 13'-1"

Marketed by

THE
**SIMMS
TEAM**

Office (727) 898-2582 - Toll Free (888) SIMMS-88

E-Mail: info@simmsteam.com

ALVA INTERNATIONAL, INC.

238 Beach Drive NE, St. Petersburg, FL 33701



Take a visual tour of this home and others at www.SimmsTeam.com