

Bay Point Treasure

101 Bay Point Drive NE • St. Petersburg, FL 33704
4 Bedrooms • 3 Baths • 2 Car Garage • 2,973 sq. ft.
63' x 149' Waterfront Lot • Pool • Dock • Davits
Offered for \$899,000. • MLS# U7546568



Tucked away in the Bay Point enclave of Snell Isle, you'll discover the meaning of home here. It's so comfortable, welcoming and peaceful, you won't want to leave. The circular brick paver drive leads to a charming Arts & Crafts inspired entry.

Step inside, and rich saltillo tile catches your eye right away. A lovely living and dining room features a wood-burning fireplace where you'll enjoy some quiet evenings or entertain friends. Beyond that is a dramatic great room, combining casual dining, family room space and a chef's custom kitchen.

Built-in cabinetry adjacent to the dining area shows off your favorite display pieces. A wall of windows on the far wall showcase the lush foliage beyond. French doors (hurricane rated) open out on one side to a shady patio, perfect for a grill, and on the other to the pool area.

The real showpiece is the Sharon Armstrong kitchen, custom designed in 2004. A central island features a surprisingly smooth surface cooktop, a casual dining bar, and creative drawers, cubby holes and bookshelves. Thoughtfully designed, there's wine storage, double-opening cabinets, and every space serves a purpose. The cabinetry is solid cherry with a cinnamon finish, and the counters are a rich granite. There are stainless steel appliances and a cherry-paneled refrigerator.

The Master suite is a true owner's retreat, with plenty of space for seating by

the bay window, and French doors with plantation shutters opening to the pool deck. There are two walk-in closets, and the bath was totally remodeled to include a wide quartz vanity with double sinks, handsome cherry cabinetry with handy inside outlets and clever storage. A glass-walled shower makes the space seem larger, and there's a door out to pool for convenience.

On the other side of the home you'll find the rest of the bedrooms. The home's original master now makes a spacious guest suite. A third bedroom is quite large, with a wall of built-in bookcases. The smaller fourth bedroom is ideal for a home office. You'll find a hall bath and an inside laundry room in this wing as well.

Outside, you'll enjoy the best of the Florida lifestyle. A gorgeous travertine deck surrounds the pool, with a heated spa. Whether you want to sunbathe or relax in the shade, there's a space for you here. Down at the dock, drop your boat in and head right out to open Tampa Bay.

All of this in one of the area's most desirable neighborhoods, just minutes from downtown and its vibrant arts, dining and cultural scenes. There's so much more to see and experience; make an appointment to see it for yourself today!

See more photos & a visual tour:
www.101BayPointDrNE.com

THE
SIMMS
TEAM



Office 727.898.2582 | Toll Free 888.SIMMS88
E-mail: info@SimmsTeam.com

ALVA International, Inc.
238 Beach Drive NE | St. Petersburg, FL 33701

www.SimmsTeam.com



Details . . .

- Clay tile roof replaced 2007
 - Saltillo tile throughout installed in 2003 (bedrooms are carpet)
 - Custom Armstrong kitchen installed 2004, with stainless steel appliances, granite counter tops, cherry Nichols cabinetry
 - Both A/C units replaced 2005
 - Master bath remodeled 2008, with granite counter tops and cherry Schuler cabinetry, and a special timer on sink pipes so no waiting for hot water.
 - Exterior painted 2008
 - Paver driveways installed 2009
 - Travertine pool deck & patio installed, pool resurfaced 2010 (outside speakers poolside)
 - LP gas services the spa
 - Davit motors recently replaced
 - New water softener in 2010
 - Optional neighborhood assoc.
 - Average Electric \$289/month
 - Average Water/Sewer/Trash & Reclaimed Water \$107/month
 - Average lawn care \$160/month
 - Average pool care \$80/month
 - Average pest control \$20/month
 - Homeowner's Insurance \$5,732 per year plus flood insurance of \$2,195 (Current owners also have Excess Flood insurance at an additional \$1,987 per year.)
 - 2011 property taxes \$10,361 with Homestead Exemption. *
- *Pinellas County Property Appraiser indicates 2011 taxes with no exemptions would be \$11,251.*



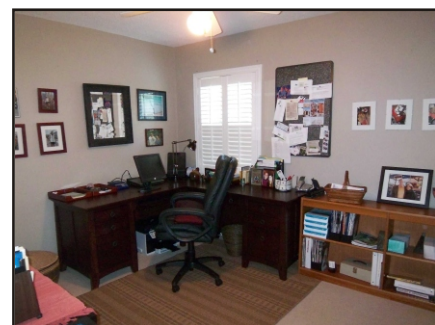
The Master suite is a true retreat, with a gorgeous remodeled bath.



This bedroom suite is ideal for guest accommodations.



The third bedroom is spacious, and the fourth makes a great home office.



You'll find lots of places to enjoy outdoors, on the patio or down at the dock.



ROOM DIMENSIONS:

Living/Dining Room: 15' x 29'
 Great Room: 24'-4" x 25'-4"
 Master Bedroom: 14'-6" x 21'-6"
 2nd Bedroom: 13'-5" x 15'
 3rd Bedroom: 13' x 14'-8"
 4th Bedroom: 11'-9" x 9'-8"

Marketed by

THE
SIMMS
TEAM

Office (727) 898-2582 - Toll Free (888) SIMMS-88
 E-Mail: info@simmsteam.com

ALVA INTERNATIONAL, INC.
 238 Beach Drive NE, St. Petersburg, FL 33701



Take a visual tour of this home and others at www.SimmsTeam.com