

# Gateway to Paradise



815 Marco Drive NE • St. Petersburg, FL 33702

4 Bedrooms + Den/Office • 2-1/2 Baths  
2 Car Garage • Swimming Pool  
Built 1988 • 3,694 square feet  
83' x 136' Waterfront Lot • Dock • Davits

[www.CayaCostaHome.com](http://www.CayaCostaHome.com)



THE  
**SIMMS  
TEAM**



Office 727.898.2582  
E-mail: [info@SimmsTeam.com](mailto:info@SimmsTeam.com)

Coastal Properties Group International  
238 Beach Drive NE | St. Petersburg, FL 33701



[www.SimmsTeam.com](http://www.SimmsTeam.com)

## 815 Marco Drive NE • St. Petersburg



A shady front porch welcomes you home. Located in the gated community of Caya Costa in Northeast St. Petersburg, you'll appreciate living in a place where Halloween is a neighborhood event, and kids collect canned goods at the holidays. And the fact that the home's water frontage gives you access to natural paradise is icing on the proverbial cake.



Formal living and dining rooms are front and center. Accent lighting and crown molding add class and charm to the space, with gorgeous light coming in from lots of windows. In the living room, a wood-burning fireplace is the focal point, flanked by built-in bookcases. Gorgeous engineered hardwood floors give a rich, warm glow underfoot.



## 815 Marco Drive NE • St. Petersburg



The kitchen is always the heart of a home, and this one is truly that. Granite counter tops, solid wood cabinetry, stainless steel appliances and a center island are among the features. There's a walk-in pantry (no shortage of storage in this home) and a large laundry room with matching cabinets and counter tops, plus a deep utility sink.



Just beyond the kitchen is a powder room for your guests, and a private study or den with French doors that open out to the pool deck. Garage access is from this versatile room.

## 815 Marco Drive NE • St. Petersburg



The Master suite is a true owner's retreat. On the second floor, it has southeastern exposure for lovely light. There's space for all of your furnishings as well as a sitting area to relax and read. On cool nights, light up the fireplace and get cozy. Accent lighting and architectural details enhance the mood.



The private bath offers several different areas. Separate vanities have wood cabinetry and granite counter tops. A jetted tub lies between the two vanities, with a large walk-in closet nearby. There's a separate room with a sauna/steam shower and water closet. There will be no issues with sharing space to dress and ready for the day.



## 815 Marco Drive NE • St. Petersburg



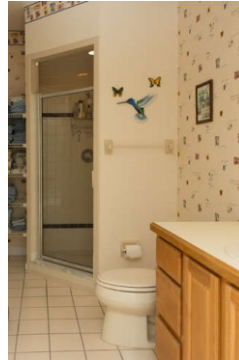
There's a lovely casual dining area adjacent to the kitchen, which overlooks the pool. Dramatic chandelier lighting sets the mood here, and the crown molding continues. The family room is quite spacious, and features a wet bar for entertaining. Both of these rooms open through French doors out to the pool deck.



You'll love being able to take a refreshing dip in the pool. Mother Nature gives you lots of privacy for skinny-dipping, if you dare, or just catch some rays lounging on the paver deck.



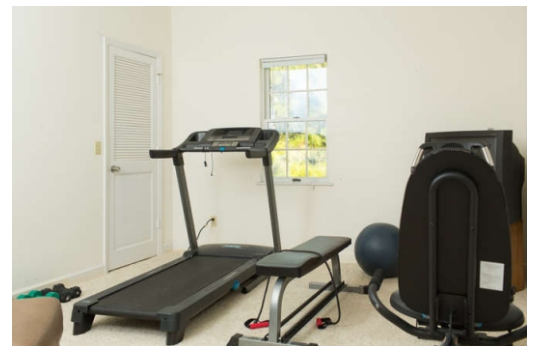
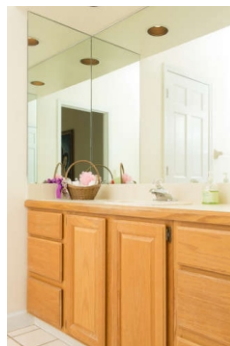
## 815 Marco Drive NE • St. Petersburg



All of the bedrooms are upstairs in this home. There's a dramatic landing with a bookcase to display your favorite things. In addition to the Master, there are three other bedrooms, one of which is currently used as an exercise room.



The bathroom is quite clever, with access from the hall and a Jack-or-Jill secondary room with vanity that's private to the blue bedroom. This space offers a great deal of flexibility depending on your needs, and there are plenty of rooms to accommodate whatever they might be.



## 815 Marco Drive NE • St. Petersburg



Do you have your gear ready? There's plenty of room to keep it on hand. And you'll need it! Follow the steps down to the water's edge. There's a nice dock with davits for your small boat - it's an easy cruise out to Tampa Bay. You can catch snook, redfish, sheepshead and mangrove snapper right off the dock. The snook in the photo below hooked itself on a line tossed in while the owner's son was cleaning the boat!

Though it is only five feet deep at high tide, the canal attracts occasional dolphin chasing mullet and manatees heading for the vegetation near Sawgrass Lake.



Another neat feature of this property is what we call the "kayak condo" (below right). It's a double-deck storage building that allows you to pull your kayak right out onto the ramp straight into the water!

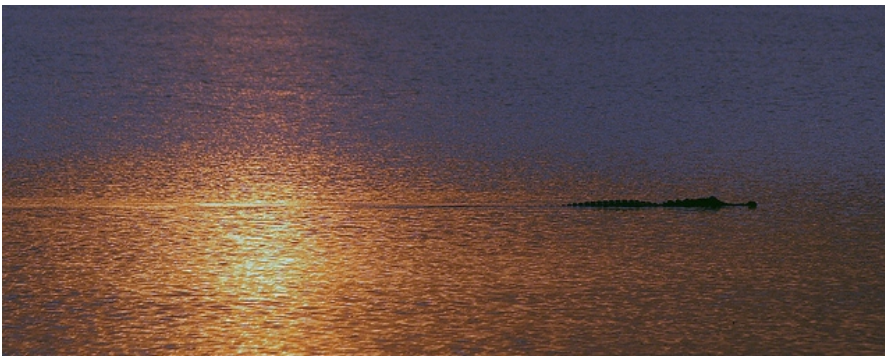


## 815 Marco Drive NE • St. Petersburg



The **Turner Creek Canal** runs between **Sawgrass Lake** and the **Weedon Island State Preserve**, St. Petersburg's two largest blocks of unspoiled nature, with interpretative centers, lookout towers and miles of boardwalks. Sawgrass Lake is fresh water, with alligators, turtle and birds. You cannot kayak there. It is boardwalk only. The Weedon Island estuary is a maze of mangroves, sandbars and natural currents that wind about five miles from the house to Tampa Bay and on to the Gulf of Mexico. Commercial guides often bring their clients there to work the flats. Because the estuary is tidal, moving water creates perfect habitat for fish, bird and crustaceans without bringing many mosquitos or other biting insects.

The estuary is great for tubing, kayaking, paddle boarding and canoeing, being largely protected from the wind. The Weedon Island State Preserve kayak trail, which snakes for miles through mangrove tunnels, is one of the area's most popular. Lesser known, but equally interesting, are the tidal trails that wind southwest through the mangroves all the way to Mangrove Bay golf course. A shallow, isolated lake there is a prime stopping place for winter migrating birds. Blue ways kayak trails run all along St. Petersburg's scenic coast line from Weedon Island down to Fort De Soto.



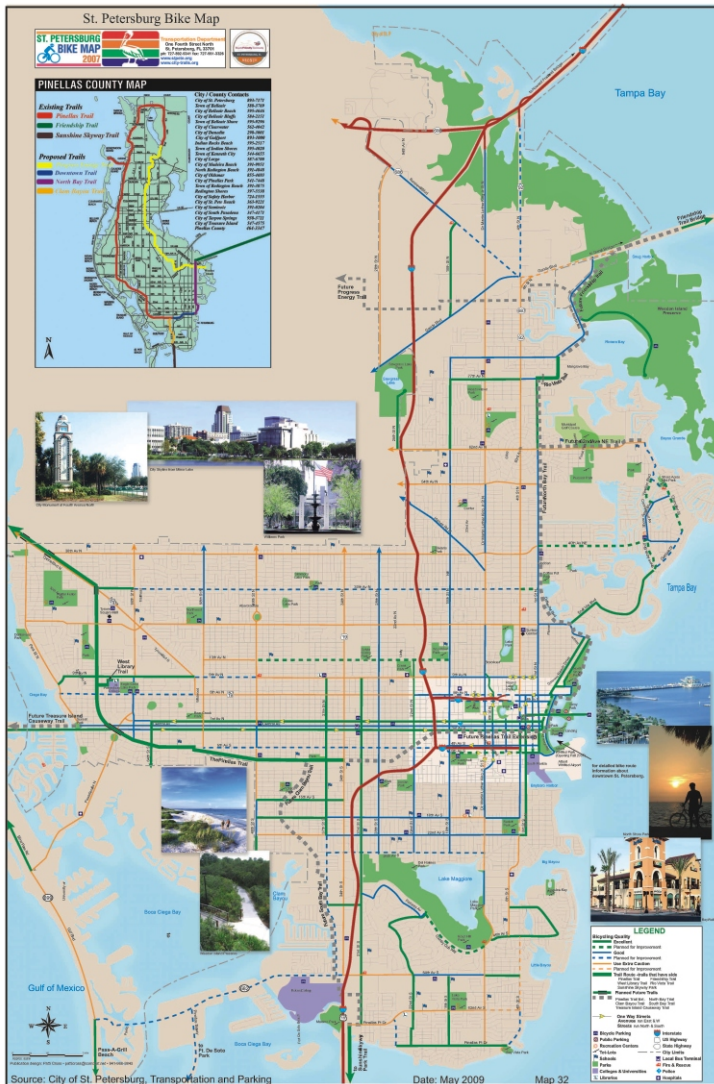
For bikers, the First Street bike path is two blocks from the Caya Costa guard house. It connects downtown St. Petersburg to Weedon Island. Bike club pelatons use it every weekend. For a good walk or easy bike ride, the round trip from the house to the Weedon Island pier is about seven miles.






**7th Annual Sand Bar Concert** Riviera Bay resident Hal Hammer Jr. and The Cross Creek Blues Band will perform their sand bar show this Memorial Day. This family-friendly event is located at the sand bar in "P" Channel, between Weedon Island and the Tanglewood neighborhood. One must use a boat/canoe/floating device to reach the sand bar; though nearby, there is no access from Weedon Island Preserve provided. Free. Sun., May 25, 1-4:30 p.m. Weedon Island Preserve, 1500 Weedon Island Drive, St. Petersburg. 727-453-6500.

On weekends, boaters gather at one of two sandbars near the preserve, letting dogs and children splash in the shallows. An annual Memorial Day Concert on the Tanglewood sandbar attracts hundreds of people who eat, drink, play in the water and listen to a blues band stationed on a barge.



Above is the Blue Ways kayak trail map along the coastline.

At left is the St. Petersburg Bike Map, which includes the First Street bike path you'll use a lot.

# 815 Marco Drive NE • St. Petersburg



Caya Costa is a gated neighborhood that includes tennis courts, a community pool and gathering area, boat/trailer storage and a boat launch. There is a guard gate with live staff 24 hours a day, 7 days a week. Home styles range from townhomes and small villas to large single-family homes, and there are a number of small lakes with pathways winding throughout for great walking.



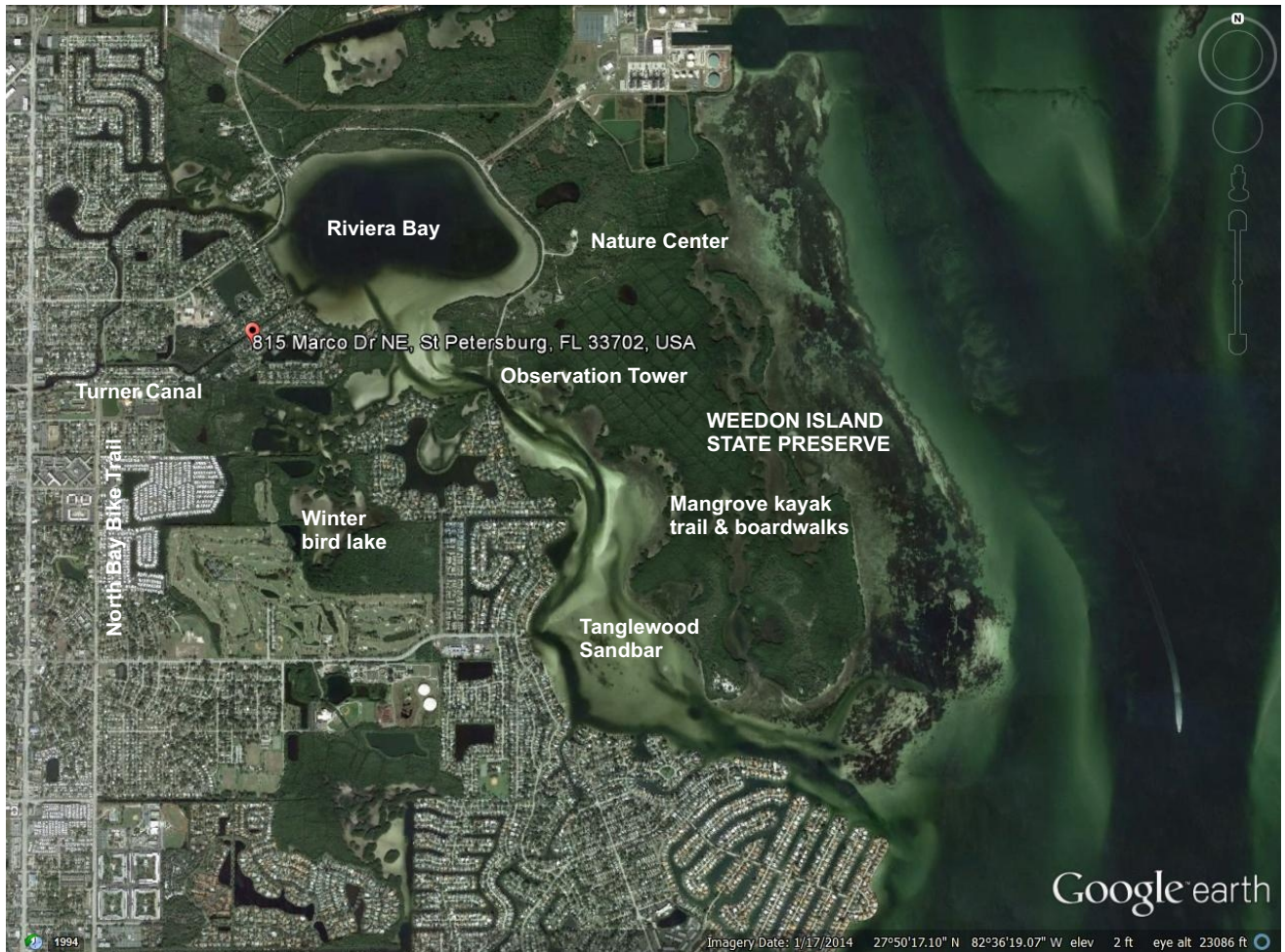
- Two-story home, built in 1988
- Four bedrooms plus office/den
- Engineered hardwood floors throughout first floor, refinished 2014
- Island kitchen renovated in 2009 features:
  - Stainless steel appliances
  - Granite counter tops
  - Solid wood cabinetry
  - Walk-in closet pantry
- Inside laundry room with utility sink, washer & dryer included (new in 2007)
- French doors open to pool deck
- Crown molding throughout
- Half bath downstairs
- Nickel fixtures throughout baths & kitchen
- Family room features wet bar and blackout shades
- Wood-burning fireplace in living room
- Under-stair storage closet
- All bedrooms upstairs, carpeted
- Master suite features:
  - Sitting Area
  - Wood-burning fireplace
  - Blackout shades
  - Bath with jetted tub, steam shower
- Fiberglass pool (resurfaced 2001) with paver deck (installed 2005), new pump in 2009
- Fenced rear yard
- Irrigation system on reclaimed water
- Dock with davits (motors replaced 2012-14, slings and cable replaced 2013) with water & electricity and has a snook light (boat and kayaks are negotiable)
- Customized hand-made storm shutters on French doors to lanai, Kevlar coating on other windows
- Hurricane reinforced garage door (2011)
- Split zoned HVAC system - downstairs replaced 2014, upstairs replaced 2010
- Water heater replaced 2013
- Roof replaced 2001
- Exterior painted 2014

### Carrying Costs:

- Homeowner's Association \$153.00/month
- Average electric bill \$300/month
- Average water/sewer/trash bill \$75/month
- Lawn care \$110/month
- Pool care \$80/month
- Pest control \$110/year
- Homeowner's insurance \$14,995/year plus flood insurance \$1,132/year

### Room Dimensions:

- Living Room 16' x 21'
- Dining Room 16' x 14'
- Breakfast Room 16' x 15'
- Family Room 15' x 14'
- Office/Den 9' x 23'
- Master Bedroom 24' x 16'
- 2nd Bedroom 16' x 13'
- 3rd Bedroom 12' x 14'
- 4th Bedroom 12' x 14'



## LOCATION, LOCATION, LOCATION

The neighborhood of Caya Costa is ideally located in Northeastern St. Petersburg. You're just 15 minutes from vibrant downtown St. Petersburg. Within twenty minutes you can be at Tampa International Airport ([www.tampaairport.com](http://www.tampaairport.com)) or International Plaza Mall. Restaurants, movie theaters and shopping are minutes away.

The St. Petersburg/Clearwater International Airport ([www.fly2pie.com](http://www.fly2pie.com)), which offers general aviation as well as carriers serving destinations in the Northeast, Midwest, South and Canada, is just twenty minutes away. Downtown St. Petersburg is also home to the Albert Whitted airport, a regional general aviation airport.

