

# Snell Arcade Condo

405 Central Ave. #400 • St. Petersburg, FL 33701  
Offered at \$384,500.

2 Bedrooms • 1-1/2 Baths • 1,400 sq. ft.  
Built 1928 • Completely Remodeled 2013



[www.SnellArcadeCondo.com](http://www.SnellArcadeCondo.com)

The best of historic design and modern amenities come together in this Snell Arcade condo. Originally built in 1928 in the Mediterranean Revival style, the upper floors were



#### The spectacular kitchen features:

- Carrara marble counter tops
- Cherry wood cabinetry
- Stainless Steel Appliances
- Natural gas range
- Built-in wine refrigerator



converted to a 12-condominium project beginning in 2003. This unit was completed in 2004 and remodeled in early 2103 with high-end European and California fixtures, hardware and cabinetry.

An open floor plan maximizes the space with beautiful high-end plantation shutters throughout the unit. The island kitchen features Carrara marble counters, cherry wood cabinetry, stainless steel appliances and a gas range.

Gorgeous vertical blonde bamboo wood flooring runs throughout the home with the exception of marble in the baths. The Master Bedroom suite includes a walk-in closet with a European wardrobe inside and custom cherry wood drawers with Carrara marble counter. The Master bathroom is a masterpiece of classic Italian modern design with a walk-in shower and marble counters and floors.

This 4th floor unit has an almost private foyer with a private elevator

entrance. All of this is within walking distance to the market, shopping, dining, sports activities, museums and the list goes on.

Experience the vibrancy of living in downtown St. Petersburg - see it for yourself today!



The open floor plan maximizes the use of space and is great for entertaining!



Office 727.898.2582 | Toll Free 888.SIMMS88  
E-mail: [info@SimmsTeam.com](mailto:info@SimmsTeam.com)

Coastal Properties Group International, LLC  
238 Beach Drive NE | St. Petersburg, FL 33701



[www.SimmsTeam.com](http://www.SimmsTeam.com)

## Details At-A-Glance:

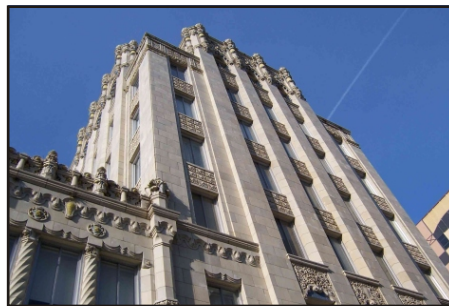
- Original building date 1928, placed on National Registry of Historic Buildings in 1982
- Condo conversion began 2003, 12 residential units total
- This unit was built out in 2004 and remodeled in early 2013.
- Secure, private elevator access
- Beautiful high-end white plantation shutters throughout the unit cover the windows and reduce noise level
- New gas range, washer, dryer
- Vertical blonde bamboo wood flooring throughout living areas and bedrooms
- Marble flooring in baths
- Kitchen features Carrara marble counters, cherry wood cabinetry, stainless steel appliances, gas range and wine refrigerator
- Master suite features European wardrobe and a lavish bath
- Condo Fee \$843.01/month includes water/sewer/trash removal, building maintenance & insurance, property management, pest control, escrow reserves
- 2 pets allowed, no weight limit
- No rental restrictions
- 1 deeded space in garage area yet to be completed; nearby parking garages offer contracts, residents are eligible for St. Petersburg downtown resident parking permits, \$15/year
- **2013 Taxes \$5,059\* without Homestead Exemption**



The Master features a built-in wardrobe and a lavish bath with walk-in shower.



You'll love the high-end materials and finishes throughout every room.



The distinctive Mediterranean Revival architecture is a favorite for photographers.



In the heart of vibrant downtown, just five blocks from the waterfront parks.

### ROOM DIMENSIONS:

Great Room: 18' x 28'  
Bedroom 1: 14' x 13'  
Bedroom 2: 14' x 13'

Marketed by  
**THE SIMMS TEAM**

Office (727) 898-2582 - Toll Free (888) SIMMS-88  
E-Mail: [info@simmsteam.com](mailto:info@simmsteam.com)

Coastal Properties Group International, LLC  
238 Beach Drive NE, St. Petersburg, FL 33701



Take a visual tour of this home and others at [www.SimmsTeam.com](http://www.SimmsTeam.com)